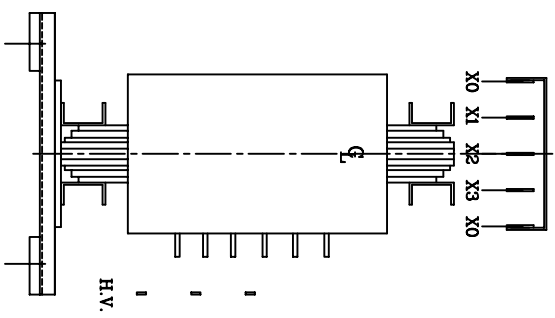
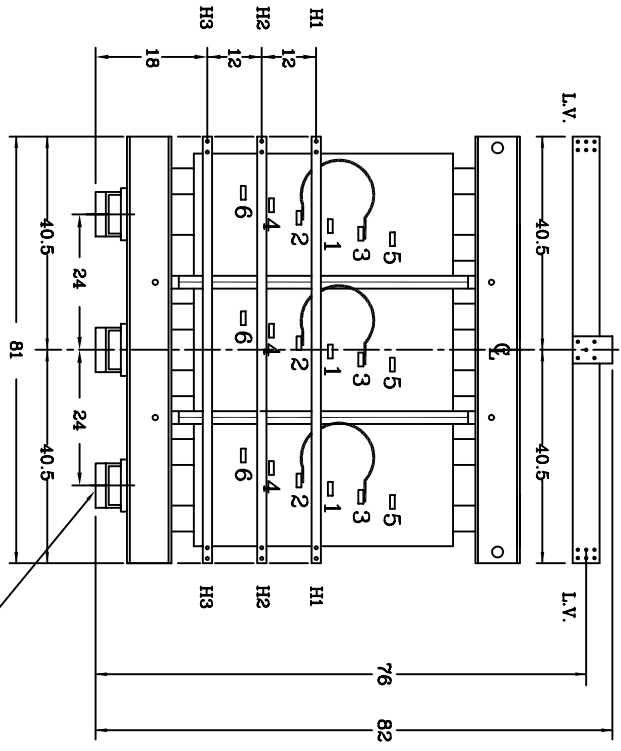


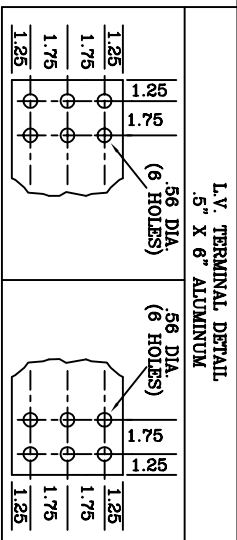
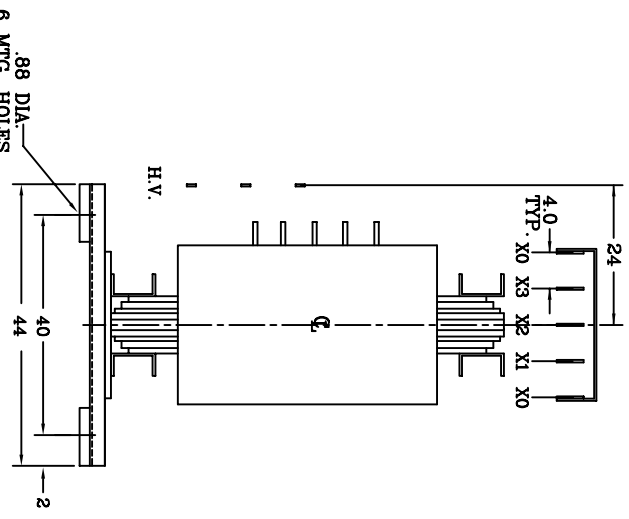
LEFT



FRONT

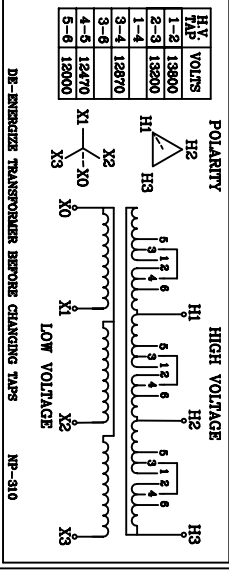


RIGHT



SUNBELT TRANSFORMER

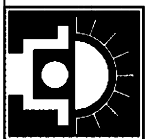
KVA	2200	3 PHASE	HERTZ	60	WGZ	1800	DRY TYPE TRANSFORMER CLASS AA
H.V. TAP	13200 A	66 KV BIL	AMPS	109	WGZ	1800	
L.V.	480V/277	10 KV BIL	AMPS	3007	NO.	480506	NC RESB 150°C 128S



SPECIFICATIONS

- 1) ALUMINUM WOUND
- 2) 220°C INSULATION
- 3) VACUUM PRESSURE IMPREGNATION
- 4) REMOVABLE MOUNTING FEET

1) REDUCED OVERALL HEIGHT AND REVISED H.V. & L.V. BUS EXTENSION DIMENSIONS AND SHOW H.V. TAP 6. 2/02/05 BRP



SUNBELT TEMPLE, TX SHARON, PA BAKERSFIELD, CA
Transformer
1-900-433-3126

DRY TYPE TRANSFORMER SPECIFICATIONS AND DIMENSIONAL DATA
DATE: 1/14/05
DRAWING NO. A61506

38982-A