

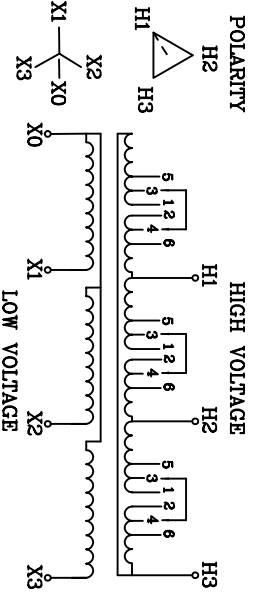
*DESIGN IMPEDANCE = 5.75%

SUNBELT TRANSFORMER

DRY TYPE TRANSFORMER CLASS AA

KVA	300	3 PHASE	HERTZ	60	%IZ	*	°C RISE	150°C
H.V.	4160 Δ	30 KV BIL	AMPS	41.6	WGFI	2000	LBS.	
L.V.	480Y/277	10 KV BIL	AMPS	360.8	NO.	A61508		

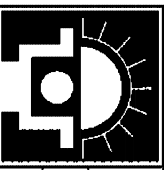
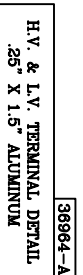
H.V. TAP	VOLTS
1-2	4368
2-3	4264
1-4	4160
3-4	4056
3-6	
4-5	3952
5-6	



DE-ENERGIZE TRANSFORMER BEFORE CHANGING TAPS NP-310SUN

SPECIFICATIONS

- 1) NEMA 1 INDOOR ENCLOSURE ASA 61 GRAY, POWDER COAT FINISH
- 2) ALUMINUM WOUND
- 3) 220°C INSULATION
- 4) VACUUM PRESSURE IMPREGNATION



SUNBELT TEMPLE, TX SHARDN, PA BAKERSFIELD, CA
 1-800-433-3128
 TITLE: DRY TYPE TRANSFORMER SPECIFICATIONS AND DIMENSIONAL DATA
 DATE: 1/13/05
 DRAWN BY: BRP
 CUSTOMER: A61508

38964-A