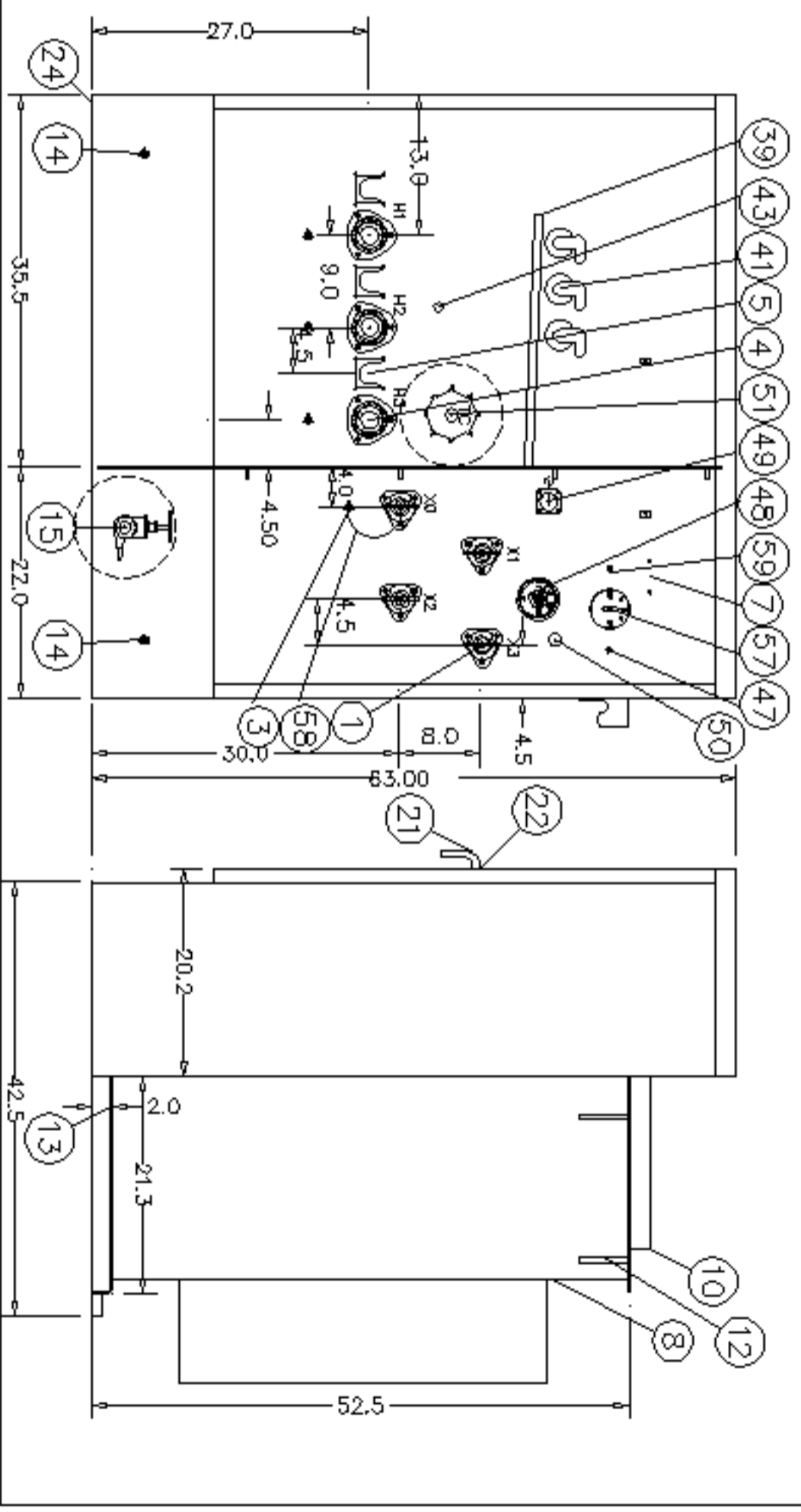
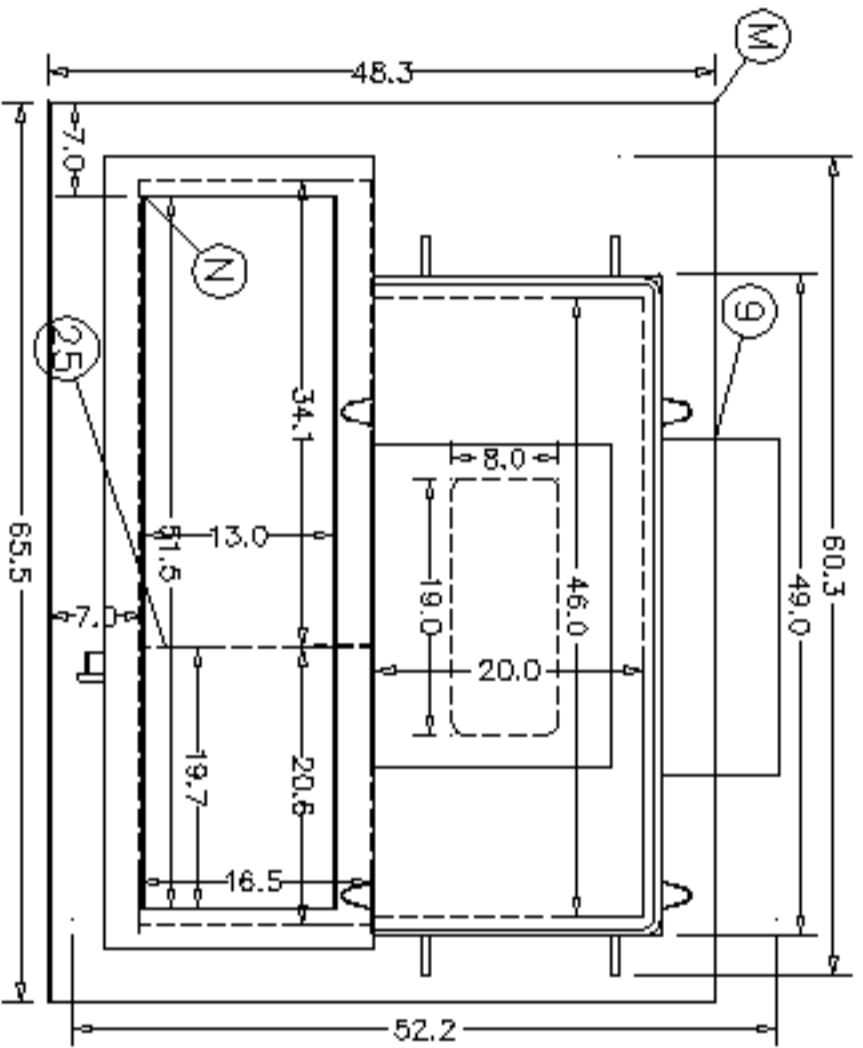


DESCRIPTION	M	SUGGEST PAD SIZE	65.5 X 48.3
	N	SUGGEST HOLE SIZE	51.5 X 13.0
1 LV BUSH. & 4 HOLE SPADE			
3 1/2-13 GROUND PAD			
4 HV LB INSERT UNIV. 95 BIL			
5 LOAD BREAK PKG STAND			
7 NP ON DOOR SER ON TANK			
8 TANK			
9 COOLING RADIATORS			
10 HANDHOLE & SECURITY COVER			
12 LIFTING LUGS			
13 JACKING PROVISIONS			
14 1/2-13 GROUND PAD			
15 1 IN DRAIN VALVE AND SAMPLER			
21 PAD LOCKABLE DOOR HANDLE			
22 3 PT LATCH PENTA SEC BOLT			
24 12 IN REMOVABLE SILL			
25 METAL LV-HV BARRIER			
39 DRIP SHIELD			
41 BAYONET FUSE HOLDER			
43 LOADBREAK SWITCH			
47 PRESS. REL VALVE			
48 DIAL THERM W/MAX POINTER			
49 2" MAG LL GAUGE: LV COMP			
50 OIL LEVEL PLUG			
51 TAP CHANGER HANDLE			
57 PRES VAC GAUGE			
58 REM GRD STRAP			
SPECIAL NOTES			
A	BAY-O-NET FUSE		
B	CPS 4000358C14 65 AMP		
B	ISOLATION LINK FUSE		
C	HI AD7		
D			
E			
CAT NO	9175435360062		
DWG BY/	BB	DATE, 10/17/03	
APP BY/	CC.	745	



10 GA. MILD STEEL TANK

DWG NO. SKBB102003.001	SUNBELT TRANSFORMER	
SUNBELT TEMPLE, TEXAS		
CUSTOMER : SUNBELT	DATED	
SPEC. PO#8380		
KVA 225.0 BIL 60 TAPSTS-2 ABOVE 2 BELOW		
HIGH VOLTAGE 4160		
LOW VOLTAGE 480Y/277		
APPROX. CORE AND COIL WEIGHT		983
APPROX. TANK AND ACCESS. WEIGHT		963
GAL. OF OIL 158, APPROX. WEIGHT		1186
APPROX. TOTAL WEIGHT		3132
REV. DATE DESCRIPTION	BY	APP
A		
ID 3BLBK Y15		

0.054 91752D01S,CB, 21,37,H01 , 1, 2, GL 504620, 635769,0, 599,2, 3300 59041978,010

3BLBK Y15