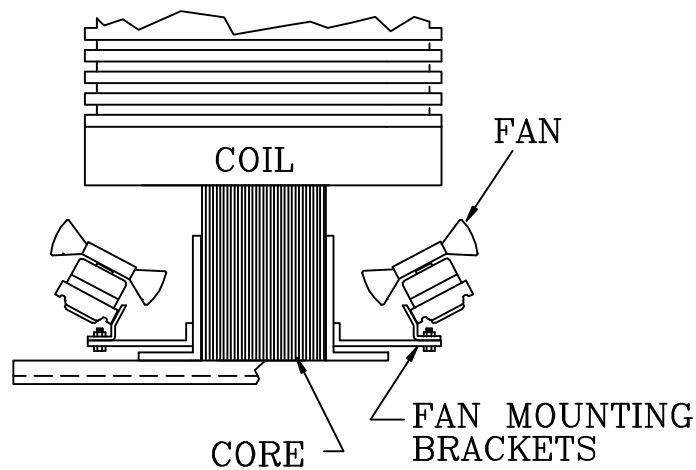


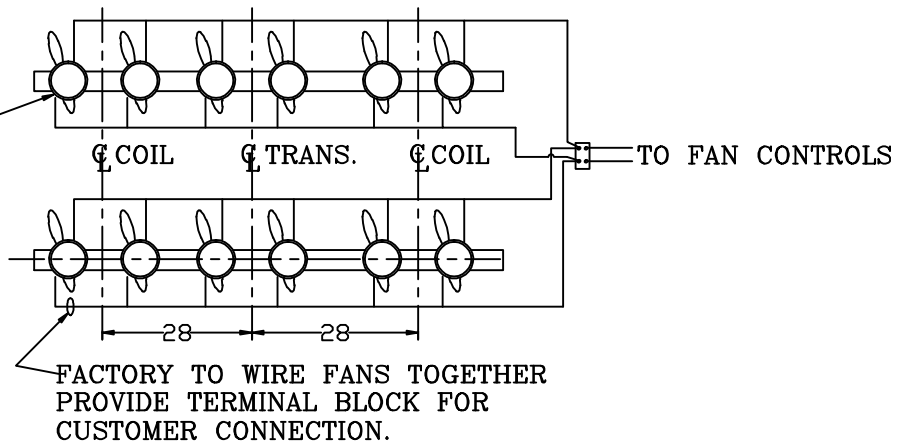
FORCED AIR COOLING SYSTEM INSTALLATION

- 1) DE-ENERGIZE TRANSFORMER AND CHECK TO IN SURE NO DANGEROUS VOLTAGES ARE PRESENT.
- 2) MOUNT THE FAN MOTORS ASSEMBLY TO TRANSFORMER CLAMP, POSITIONING FANS ON THE CENTER LINES OF EACH COIL. SEE FIG.1 FOR CORRECT ORIENTATION. REPEAT FOR THE OPPOSITE SIDE OF CORE & COIL ASSEMBLY.
- 3) CONNECT FAN MOTOR LEADS TO FAN CONTROL DEVICE (OBSERVE SAFE CLEARANCES TO ANY HIGH VOLTAGE BUS/SOURCE)
- 4) INSTALLATION IS NOW COMPLETE. REPLACE ALL ENCLOSURE PANELS AND ENERGIZE TRANSFORMER. REFER TO INSTRUCTION MANUAL PROVIDED WITH FAN CONTROL AND COMPLETELY TEST CONTROL INCLUDING OPERATION OF FANS, ALARMS, AND HIGH LIMIT TRIP.

FIG.1

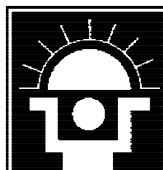


FACTORY TO MOUNT FANS TO MOUNTING CHANNELS



FACTORY TO WIRE FANS TOGETHER PROVIDE TERMINAL BLOCK FOR CUSTOMER CONNECTION.

FIG.2



SUNBELT TEMPLE, TX SHARDN, PA BAKERSFIELD, CA
transformer 1-800-433-3128

TITLE:	DRY TYPE TRANSFORMER SPECIFICATIONS AND DIMENSIONAL DATA	DRAWN BY:	KHT
DATE:	4/24/06	CUSTOMER:	DRAWING NO.:
			A63521