

CORE & COIL

Dry- Power Transformer

3 Phase . 220 deg.c insulation
 Taps : 2 at 2 1/2% above and below nominal
 Aluminum windings and terminations
 Overload capacity : 33% (when required)

FEATURES

Termination locations to match or mate with customer supplied equipment.
 Windings designed for optimum impulse distribution
 Vacuum pressure Impregnated coils.
 Designed, manufactured, and tested per ANSI, NEMA and IEEE Standards
 C57-12.01, C57-12.91 , C57-12.55 and NEMA ST-20

OPTIONS

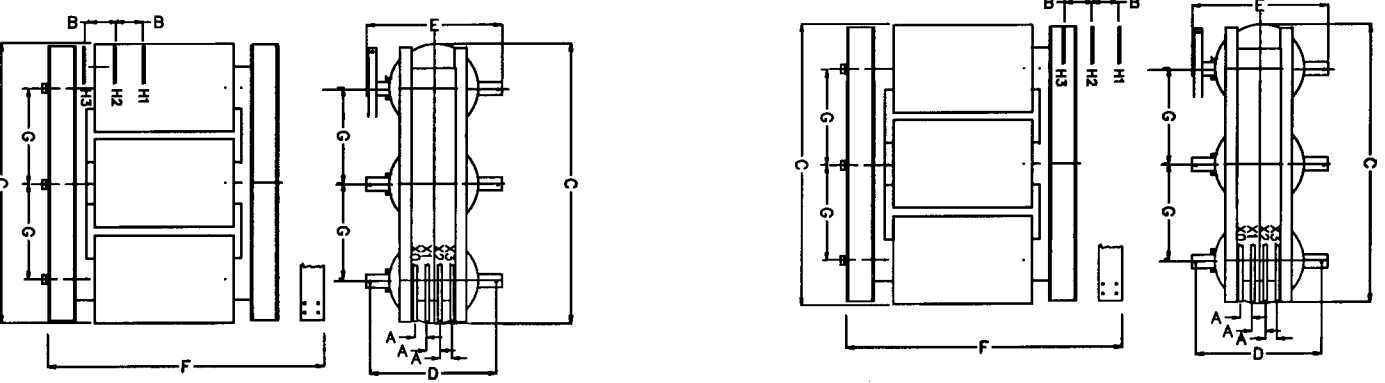
Supplied as open core & coil for use in customer furnished enclosure.
 Special sound levels.
 Special Bill levels
 50 HZ for export application
 Bus termination for switchgear operation
 Other enclosure configurations and dimensions for specific applications.

15KV Class - 60KV BIL

KVA	150DEG.C RISE							115DEG.C RISE							80 DEG.C RISE												
	CAT. #	A	B	C	D	E	F	G	WT. LBS.	CAT. #	A	B	C	D	E	F	G	WT. LBS.	CAT. #	A	B	C	D	E	F	G	WT. LBS.
750	3AH40CK3AA	6.0	6.0	63.0	23.0	40.0	63.0	13.5	3900	3AF40CK3AA	6.0	6.0	64.0	23.0	40.0	63.0	13.5	4200	3AB40CK3AA	6.0	6.0	65.0	23.0	40.0	65.0	13.5	4600
1000	3AH46CK3AA	6.0	6.0	65.0	23.0	40.0	65.0	13.5	4600	3AF46CK3AA	6.0	6.0	66.0	23.0	40.0	65.0	13.5	5000	3AB46CK3AA	6.0	6.0	72.0	23.0	40.0	72.0	13.5	5900
1500	3AH52CK3AA	6.0	6.0	68.0	23.0	46.0	72.0	14.0	5900	3AF52CK3AA	6.0	6.0	70.0	23.0	46.0	72.0	14.0	6500	3AB52CK3AA	6.0	6.0	75.0	23.0	46.0	75.0	14.0	7100
2000	3AH58CK3AA	6.0	6.0	70.0	23.0	46.0	75.0	14.0	7100	3AF58CK3AA	6.0	6.0	72.0	23.0	46.0	75.0	14.0	7800	3AB58CK3AA	6.0	6.0	78.0	23.0	46.0	78.0	14.0	7800
2500	3AH61CK3AA	6.0	6.0	72.0	23.0	46.0	78.0	14.0	7800	3AF61CK3AA	6.0	6.0	73.0	23.0	46.0	78.0	14.0	8600	3AB61CK3AA	6.0	6.0	83.0	23.0	46.0	83.0	14.0	9600
3000	3AH62CK3AA	6.0	6.0	83.0	30.0	46.0	83.0	15.0	9600	3AF62CK3AA	6.0	6.0	85.0	30.0	46.0	83.0	15.0	10800	3AB62CK3AA	6.0	6.0	85.0	30.0	46.0	85.0	15.0	10900
3750	3AH67CK3AA	6.0	6.0	95.0	30.0	46.0	85.0	15.0	10900	3AF67CK3AA	6.0	6.0	97.0	30.0	46.0	85.0	15.0	12000	3AB67CK3AA	6.0	6.0	96.0	30.0	52.0	96.0	15.0	15600
5000	3AH70CK3AA	6.0	6.0	98.0	40.0	52.0	96.0	18.0	15600	3AF70CK3AA	6.0	6.0	100.0	40.0	52.0	96.0	18.0	17300	3AB70CK3AA	6.0	6.0	106.0	40.0	52.0	112.0	18.0	20280

15KV Class - 95KV BIL

KVA	150DEG.C RISE							115DEG.C RISE							80 DEG.C RISE												
	CAT. #	A	B	C	D	E	F	G	WT. LBS.	CAT. #	A	B	C	D	E	F	G	WT. LBS.	CAT. #	A	B	C	D	E	F	G	WT. LBS.
750	3AH40CK3AA	6.0	6.0	63.0	23.0	40.0	68.0	13.5	4000	3AF40CK3AA	6.0	6.0	63.0	23.0	40.0	68.0	13.5	4400	3AB40CK3AA	6.0	6.0	65.0	23.0	40.0	72.0	13.5	4600
1000	3AH46CK3AA	6.0	6.0	65.0	23.0	40.0	72.0	13.5	4800	3AF46CK3AA	6.0	6.0	65.0	23.0	40.0	72.0	13.5	5100	3AB46CK3AA	6.0	6.0	68.0	23.0	40.0	78.0	14.0	6200
1500	3AH52CK3AA	6.0	6.0	68.0	23.0	46.0	78.0	14.0	6200	3AF52CK3AA	6.0	6.0	68.0	23.0	46.0	78.0	14.0	6600	3AB52CK3AA	6.0	6.0	70.0	23.0	46.0	81.0	14.0	7500
2000	3AH58CK3AA	6.0	6.0	70.0	23.0	46.0	81.0	14.0	7500	3AF58CK3AA	6.0	6.0	70.0	23.0	46.0	81.0	14.0	8300	3AB58CK3AA	6.0	6.0	72.0	23.0	46.0	84.0	14.0	8200
2500	3AH61CK3AA	6.0	6.0	72.0	23.0	46.0	84.0	14.0	8200	3AF61CK3AA	6.0	6.0	72.0	23.0	46.0	84.0	14.0	9100	3AB61CK3AA	6.0	6.0	83.0	30.0	46.0	89.0	15.0	10100
3000	3AH62CK3AA	6.0	6.0	83.0	30.0	46.0	89.0	15.0	11200	3AF62CK3AA	6.0	6.0	83.0	30.0	46.0	89.0	15.0	12200	3AB62CK3AA	6.0	6.0	85.0	30.0	46.0	92.0	15.0	11500
3750	3AH67CK3AA	6.0	6.0	95.0	30.0	46.0	92.0	15.0	11500	3AF67CK3AA	6.0	6.0	95.0	30.0	46.0	92.0	15.0	12700	3AB67CK3AA	6.0	6.0	98.0	36.0	52.0	104.0	18.0	16500
5000	3AH70CK3AA	6.0	6.0	98.0	40.0	52.0	104.0	18.0	16500	3AF70CK3AA	6.0	6.0	98.0	36.0	52.0	104.0	18.0	18100	3AB70CK3AA	6.0	6.0	104.0	36.0	52.0	112.0	20.0	21500

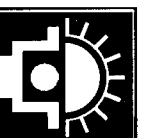


Dimensions and weights are approximate and subject to change without notice. Certified drawings for construction upon request.

VOLTAGE OPTIONS

PRIMARY VOLTAGE	12000 D	208Y/120	SECONDARY VOLTAGE	2400 D
	12470 D	480 D		4160 GrdY/2400
	13200 D	480 D		4160 GrdY/2400
	13800 D	480Y/277		4160 D

VOLTAGE RATINGS THRU 23 & 34.5 KV ARE AVAILABLE. CONTACT WITH SPECIFIC APPLICATION REQUIREMENTS.



SUNBELT
Transformer™

1922 S. MLK. Jr. DR.
 TEMPLE TX 76504

TITLE: CORE & COIL DRY-POWER TRANSFORMER
 Dimension, weight and Design data
 DATE: 02/27/90
 DRAWING NO.: 46-9940-1008