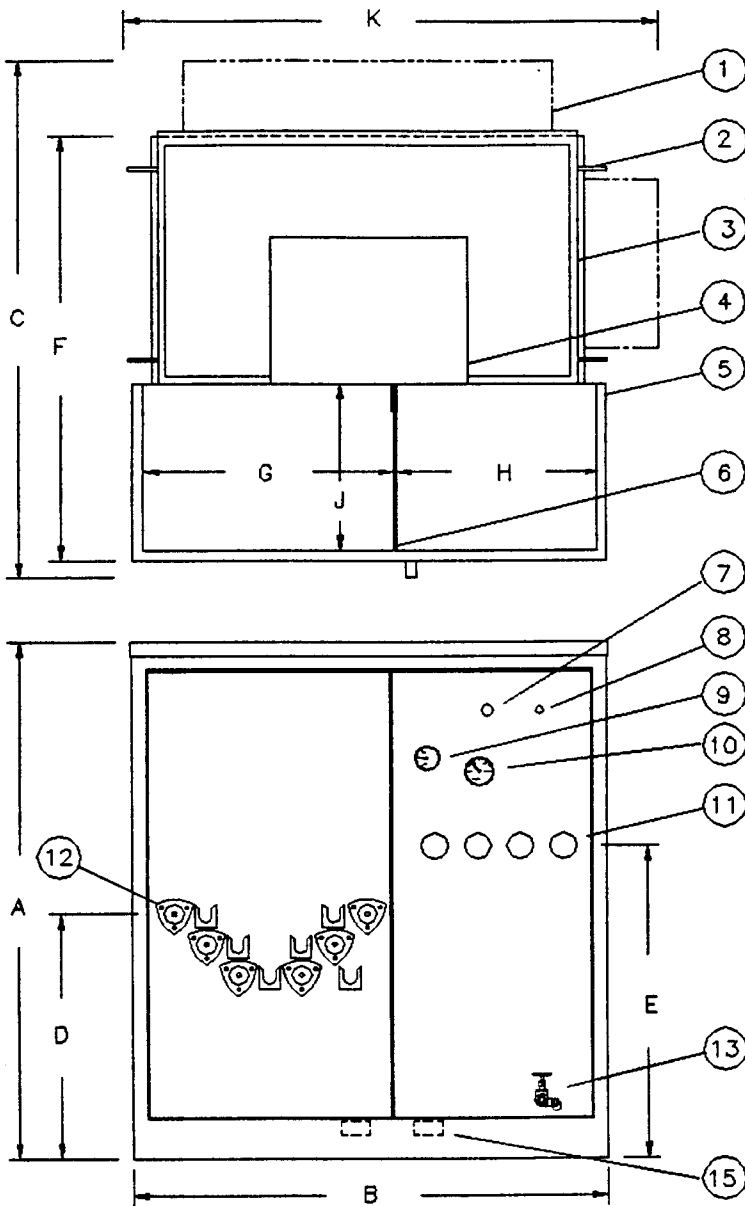
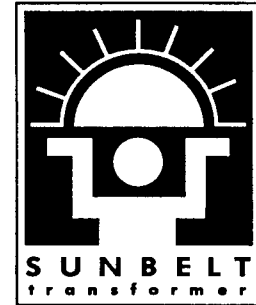


THREE PHASE PADMOUNTED TRANSFORMER (WITH OPTIONAL FUSING \*)  
 LOOP FEED-DEAD FRONT-150 BIL (HIGH VOLTAGE 35 KV AND BELOW)

\* BAYONET FUSING MAY NOT BE APPLICABLE TO SOME UNITS



| ITEM | DESCRIPTION                         |
|------|-------------------------------------|
| 1    | COOLING PANELS                      |
| 2    | LIFTING LUGS                        |
| 3    | PROVISIONS FOR JACKING              |
| 4    | HANDHOLE WITH COVER                 |
| 5    | CABINET                             |
| 6    | STEEL HI/LO BARRIER                 |
| 7    | 1" NPT FILL/FILTER PRESS CONNECTION |
| 8    | PRESSURE RELIEF VALVE               |
| 9    | LIQUID LEVEL GAUGE                  |
| 10   | LIQUID TEMP. GAUGE                  |
| 11   | LV BUSHINGS                         |
| 12   | DEAD FRONT HV BUSHINGS              |
| 13   | DRAIN VALVE WITH SAMPLER            |
| 14   | 1/2"-13 GROUND PADS                 |

NOTE: DIMENSIONS ARE FOR REFERENCE, NOT FOR CONSTRUCTION

| KVA  | A     | B     | C     | D     | E     | F     | G     | H     | J     | K     | WT    | GAL |
|------|-------|-------|-------|-------|-------|-------|-------|-------|-------|-------|-------|-----|
| 1000 | 79.00 | 72.25 | 79.81 | 40.00 | 46.00 | 59.56 | 39.50 | 29.75 | 20.00 | 74.25 | 9649  | 447 |
| 1500 | 79.00 | 70.75 | 78.31 | 40.00 | 46.00 | 61.56 | 38.00 | 29.75 | 20.00 | 74.75 | 12422 | 563 |
| 2000 | 86.00 | 74.50 | 86.56 | 48.00 | 55.00 | 66.31 | 38.50 | 33.00 | 24.00 | 78.00 | 15616 | 630 |
| 2500 | 86.00 | 77.00 | 90.31 | 47.00 | 55.00 | 66.56 | 38.00 | 33.00 | 24.00 | 81.00 | 16248 | 707 |